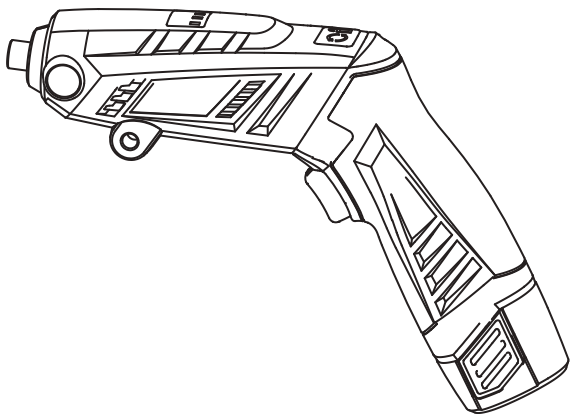


R7190-1 MINI POLISHER

PRODUCT MANUAL



WARNING



To reduce the risk of injury, user must read and understand product manual.

INTENDED USE

GENERAL SAFETY INFORMATION

WARNING!

Read and understand all instructions. Failure to follow all instructions listed below may result in electric shock, fire, and/or serious personal injury.

DANGER!

People with electronic devices such as pacemakers should consult their physicians before using this product. Operational or electrical equipment in close proximity to a pacemaker could cause interference or failure of a pacemaker.

WORK AREA SAFETY

- Keep your work area clean and well lit. Cluttered benches and dark areas invite accidents.
- Do not operate power tools in explosive atmospheres, such as in the presence of flammable liquids, gases, or dust. Power tools create sparks which may ignite the dust or fumes.
- Keep bystanders, children, and visitors away while operating a power tool. Distractions can cause you to lose control.

To reduce your exposure to these chemicals, work in a well ventilated area and always wear a dust mask that filters out microscopic particles. Handling a power cord may expose you to lead. When handling a power cord in the use of this tool, always wash hands after handling.

ELECTRICAL SAFETY

- Battery operated tools with integral batteries or a separate battery pack must be recharged only with the specified charger for the battery. A charger that may be suitable for one type of battery may create a risk of fire when used with another battery.
- Do not expose power tools to rain or wet conditions. Water entering a

power tool will increase the risk of electric shock.

- Contact with a “live” wire will also make exposed metal parts of the tool “live” and shock the operator.

PERSONAL SAFETY

- Stay alert, watch what you are doing and use common sense when operating power tool.
- Do not use tools while tired or under the influence of drugs, alcohol, or medications. A moment of inattention while operating power tools may result in serious personal injury.
- Always wear safety goggles or eye protection when using these tools.
- Secure the material being worked on. Never hold material it in your hand or across your legs. Unstable support can cause loss of control and injury.
- Avoid accidental starting. Ensure the switch is in the Off position before using these tools.
- Remove any adjusting key or wrench before turning power tools on. A wrench or a key left attached to a rotating part of the power tools may result in personal injury.
- Do not overreach. Keep proper footing and balance at all times. This enables better control of power tools in unexpected situations.
- Dress properly. Do not wear loose clothing or jewelry. Keep your hair, clothing and gloves away from moving parts. Loose clothes, jewelry or long hair can be caught in moving parts.
- If devices are provided for the connection of dust extraction and collection facilities, ensure these are connected and properly used. Use of these devices can reduce dust related hazards.
- Use auxiliary handles supplied with tools. Loss of control can cause personal injury.

POWER TOOL USE AND CARE

- Do not force power tools. Use correct power tools for your application. The correct power tools will do the job better and safer at the rate for which it was designed.
- Do not use power tools if the switch does not turn it on and off. Power tool that cannot be controlled with the switch is dangerous and must be repaired.

SERVICE

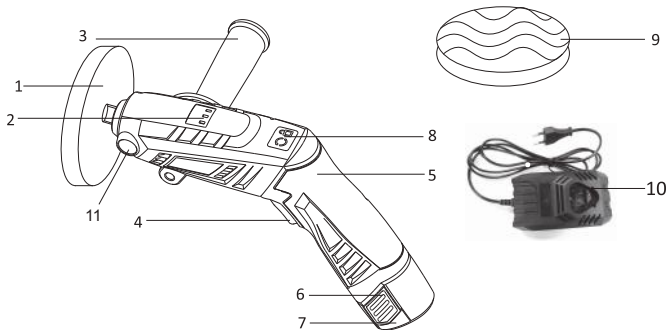
- Have your power tools serviced by a qualified repair person using only identical replacement parts. This will ensure that the safety of the power tools' is maintained.

SPECIFIC SAFETY RULES

- Wear ear protectors. Exposure to noise can cause hearing loss.
- Use auxiliary handle(s), if supplied with the tool. Loss of control can cause personal injury.
- Hold power tools by insulated gripping surfaces, when performing an operation where the cutting accessory may contact hidden wiring or its own cord.
- Keep hands away from all edges and moving parts.
- Maintain labels and nameplates. These carry important information. If unreadable or missing, contact a MASSO service facility for a free replacement.
- **WARNING:** Some dust created by power sanding, grinding, and other construction activities contains chemicals known to cause cancer, birth defects or other reproductive harm. Some examples of these chemicals are:
 - lead from lead-based paint
 - crystalline silica from bricks and cement and other masonry products.
 - arsenic and chromium from chemically-treated lumber.

Your risk from these exposures varies, depending on how often you do this type of work. To reduce your exposure to these chemicals: work in a well ventilated area, and work with approved safety equipment, such as those dust masks that are specially designed to filter out microscopic particles.

FUNCTIONAL DESCRIPTION




- | | |
|------------------------|--------------------------------|
| 1. 3" Sanding pad | 2. Battery indicator |
| 3. Side handle | 4. Variable Speed Switch |
| 5. Anti-slip Soft Grip | 6. Battery Pack Release Button |
| 7. Battery Pack | 8. Lock Button |
| 9. wave sponge | 10. Charger |
| 11. spindle lock | |

SPECIFICATIONS

Mini Polisher:

Model Number	R7190
Voltage	12 V
Pad Diameter	3"(75mm)
Orbit per Minute	0-2800 RPM
Tool Weight	0.76 Kg

SYMBOLS

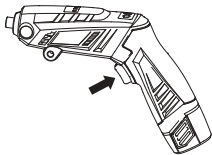
SYMBOL	NAME	EXPLANATIO
V	Volts	Voltage (potential)
A	Amperes	Current
Hz	Hertz	Frequency(cycles per second)
~	Alternating Current	Type of Current
n_0	No Load Speed	No-Load Rotational Speed
Kg	Kilograms	Weight
==	Direct Current	Type of Current
RPM	Revolutions per Minute	Revolutions, Surface Speed, Strokes, etc. per Minute
	Class II Construction	Denotes Double Insulation

INSTRUCTIONS OF TOOLS

WARNING

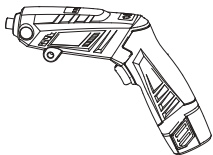
It is advisable to always wear work gloves during operation of this tool due to the high speed spinning of the sanding pad.

VARIABLE SPEED SWITCH



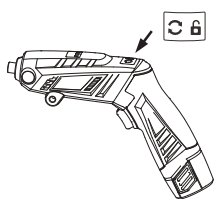
Adjust the speed of the machine by holding down the Variable Speed Switch(5).

SWITCH LOCKING FOR CONTINUOUS USE



Pull trigger(5),press knob(6) with your thumb, switch locking for continuous useÿ unlock the switch by pulling again trigger(5) and then releasing it.

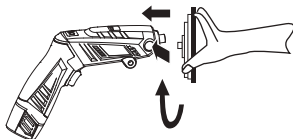
ROTATION OF THE SIDE HANDLE



Press the button(9) while turning to your preferred orientation.

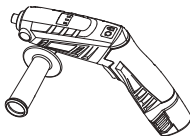
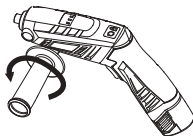


INSTALLING THE SANDING PAD



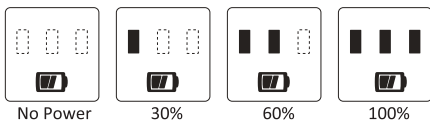
Press the spindle button to make the spindle fixed, then turn clockwise to fasten the sanding pad onto the machine then tighten it.

INSTALLING SIDE HANDLE



Turn anticlockwise to fasten the side handle onto the machine. The auxiliary side handles(3) may be mounted for either left-handed or right-handed user.

APPROXIMATE RUN TIME REMAINING



INSTALLING OR REMOVING BATTERY PACK

TO REMOVE BATTERY PACK: Depress the battery pack release button (7) and pull the battery pack (8) out of tool.

TO INSTALL BATTERY PACK: Push the battery pack (8) onto tool until it locks in place.

BATTERY CHARGING OPERATION



STATUS INDICATOR LAMP OF CHARGER

- Power-on ● Green light
- Charging ● Red light
- Charged ● Green light

IMPORTANT BATTERY PACK NOTES

CAUTION

A Lithium-ion battery pack can remain in charger without damaging the battery or the charger. The battery will remain fully charged in the charger.

If you remove the battery pack from the battery compartment before the battery is fully charged, it will not cause any damage to the battery. If several charging operations are performed consecutively, the charger can become warm. It is normal and does not indicate any technical defect.

The efficiency of discharge of the battery will decrease in the low temperature. When the circumstance temperature is lower than -10°C , the battery pack will shut down automatically and it is normal that the power tool is unable to use.

The internal temperature of the battery will continuously increase in repeatedly high power operation or overload. If the pack is overheated, it will disconnect automatically. The power tool does not work until the temperature goes down to the normal temperature.

CAUTION

DO NOT USE THE BATTERY PACK if it is damaged and liquid is leaked from the battery pack cells. If this leakage gets on your skin, please wash affected part immediately and observe any skin reaction. If necessary, please seek medical attention.

WARNING

To reduce the risk of injury or explosion, never burn or incinerate a battery pack even if it is damaged, dead or completely discharged. When burned, toxic fumes and materials are created.

CAUTION

Only allow children at least 8 years old to use the is able to use the battery charger in a safe way and explain that it is not a toy and must not be played with.

- Instruct the child not to try and recharge non-rechargeable batteries because of the danger of eruption;
- Examine the battery charger regularly for damaged, it must not be used until it has been repaired.

This tool is not intended for use by persons (including children) with reduced physical, sensory or mental capabilities, or lack of experience and knowledge, unless they have been given supervision or instruction concerning use of the appliance by a person responsible for their safety. Children should be supervised to ensure that they do not play with the tool.

MAINTENANCE

Maintenance and Storage

Store your charger in a cool, dry place. As a general practice, it is best to unplug battery chargers and remove battery packs when not in use. No battery pack damage will occur, however, if the charger and battery pack are left plugged in.

Your tool has been designed to operate over a long period of time with a minimum of maintenance.

Continuous satisfactory operation depends upon proper tool care and regular cleaning.

Your charger does not require any maintenance apart from regular cleaning.

Unplug the charger before cleaning it.



Regularly clean the charger using a soft brush or dry cloth.

Regularly clean your tool using a damp cloth.

Do not use any abrasive or solvent-based cleaner.

ACCESSORIES

Use only accessories that are recommended by the manufacturer for your model. Accessories that may be suitable for one tool may become hazardous when used on another tool.

Your tool has been designed to operate over a long period of time with a minimum of maintenance.

Continuous satisfactory operation depends upon proper tool care and regular cleaning.

Your charger does not require any maintenance apart from regular cleaning.

PROTECTING THE ENVIRONMENT

Before disposing of damaged, check with your state Environmental Protection Agency to find out about special restrictions on the disposal of tool or return them to a certified service center for recycling.